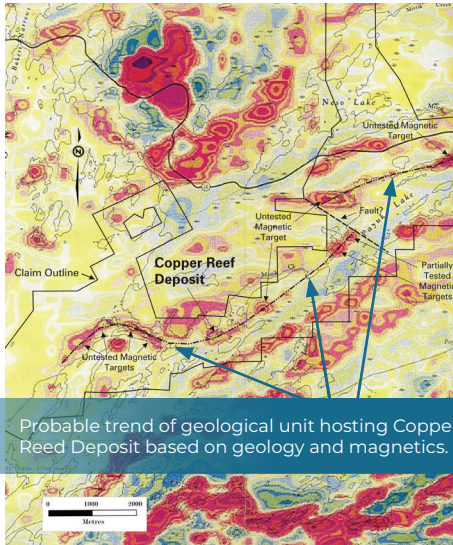


FACT SHEET | Q2 2024

MINK NARROWS GROUP PROJECT

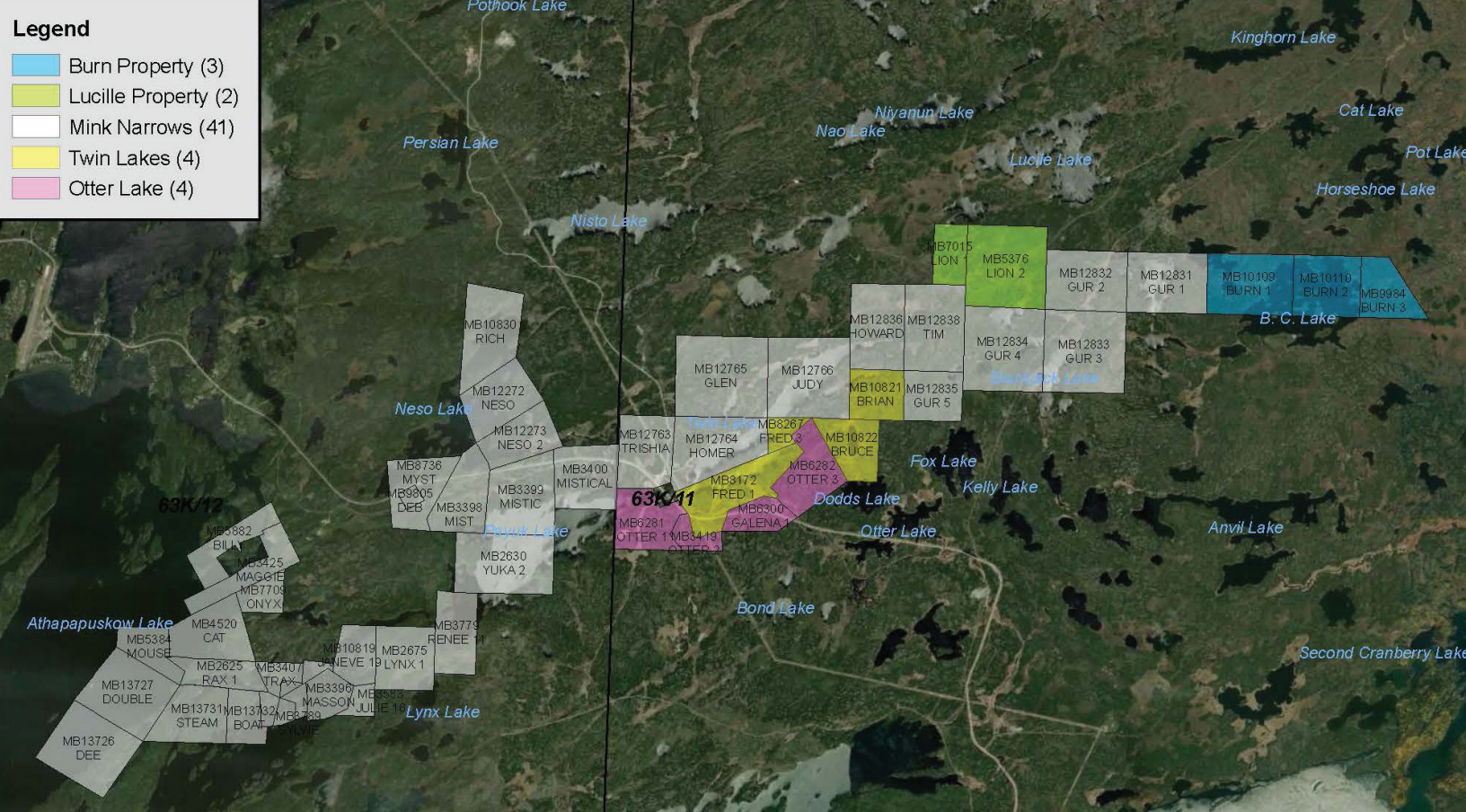
TRANSFORMATIONAL HIGH GRADE POLYMETALLIC COPPER VMS PROJECT IN MANITOBA



- + Historical non-compliant Falconbridge estimated resource on the key Copper Reef deposit of over 500,000 t grading 1.5% copper and .5% zinc and open to depth and strike.
- + Extensive exploration by Falconbridge and HudBay Minerals with over 15,000m of drilling and multiple geophysics programs.
- + Drill hole MN-00-38 intersected 4.23% copper, 0.34% zinc, 11.8 g/t silver, 255 ppb gold over 4.1m
- + Right to earn 100% interest in district scale (72.4 km²) contiguous polymetallic copper VMS deposit containing copper/zinc/nickel/gold/silver/cobalt/ lead and trace gallium in four distinct regions.
- + Located 27 kms from the Hudbay Minerals 777 mine copper zinc processing facility which needs feed stock setting potential for substantial capital cost reductions and time saving to achieve production.
- + Flin Flon has a long history of mining and has produced over 170mt of sulphide from 31 VMS deposits and over \$1.6B in infrastructure investment, all in Manitoba, the best mining province in Canada.
- + Technical partners and exploration office located in Flin Flon with over 70 years of experience in the regional mining camp and strong ties to the mining community, including Richard Masson who will become the new President and CEO and Jim Engdahl who will become a director.
- + Located 25 kms from Flin Flon traversed by a provincial highway, power lines, 500m from rail and 2kms from the Flin Flon airport.



WWW.AFRICANENERGYMETALS.COM



MINK NARROWS GROUP PROJECT

COPPER REEF DEPOSIT

- + **Historical Significance:** Originally explored by Falconbridge, indicating a long-standing interest in the area's base metal potential.
- + Copper focus with cobalt, silver and zinc: Known for its promising copper mineralization and cobalt mineralization, with exploration aimed at uncovering extensive copper deposits on strike and at depth.

OTTER-TWIN GOLD PROPERTY

- + **Rich Vein Networks:** Features narrow quartz veins rich in silver and gold, with notable finds such as the Payuka and Joplin veins showing gold grades up to 140 g/t and significant lead values typical of the Gurney Mine Structure.
- + **Historical High-Grade Gold:** Sample analysis has revealed high gold content, with grab samples from various veins including the Parres Vein assaying up to 4.448 oz/t gold and significant silver, copper, and lead.

LUCILLE PROPERTY

- + **Copper and Silver Potential:** Characterized by massive pods and stringers of chalcopyrite, offering significant copper grades over considerable widths in trenches.
- + Extensive exploration drilled to 100 m depth, indicating potential for a major copper-silver deposit, possibly similar to Chibougamau-type deposits.

BURN CLAIMS PROPERTY

- + **Diverse Metal Content:** Exhibits notable nickel-copper-gold mineralization, with historical drilling by HudBay Minerals showing 2.48% Cu and 1.2% Ni.
- + **Recent Exploration:** 2011 airborne geophysical survey pinpointed numerous conductors and subsequent mapping in 2014 highlighted potential for nickel-copper deposits formed by ultramafic bodies, setting the stage for targeted drilling.
- + New additional coverage tying on to the 2011 airborne EM survey is planned for the western 75% of the property will outline new targets.

